

# RENAULT ESL

S.O.S Car Simulator instruction manual

## ESL/ELV REPLACEMENT PROGRAM

Page	Content	MIN. VERSION	PHOTO	PINOUT	VIDEO
Page 2	• Program introduction				
Page 3	• <b>Renault ESL 1</b>	001			
Page 4	• <b>Renault ESL 2</b>	001			
Page 5	• <b>Renault ESL 3</b>	001			





## ● Program introduction



### Example cars

#### ESL 1

Captur  
Clio III  
Clio IV  
Espace IV (phase III)  
Fluence  
Laguna III  
Megane II  
Megane II (lift 2004-2006)  
Megane III  
Scenic II  
Scenic III  
Talisman

#### ESL 2

Espace IV  
Espace IV (phase II)  
Laguna II  
Laguna II (lift 2004-2006)

#### ESL 3

Megane 4  
Talisman  
Kadjar  
Koleos

## ●●● Jumpers to solder

To choose the program you have to solder specific jumpers on the back of the Emulator:

#### ESL 1



7 6 5 4 3 2 1

6+2

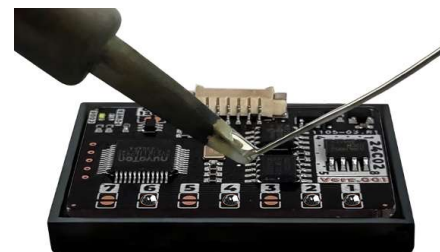
#### ESL 2



7 6 5 4 3 2 1

6+2+1

#### ESL 3



7 6 5 4 3 2 1

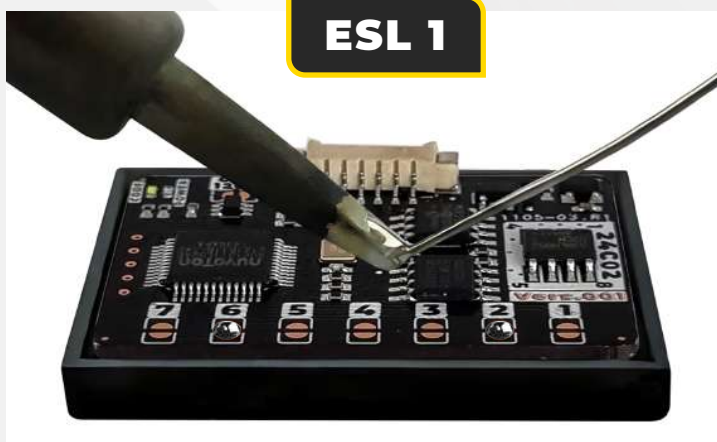
6+4+2+1

If the Emulator doesn't work, solder an additional jumper CAN 120R

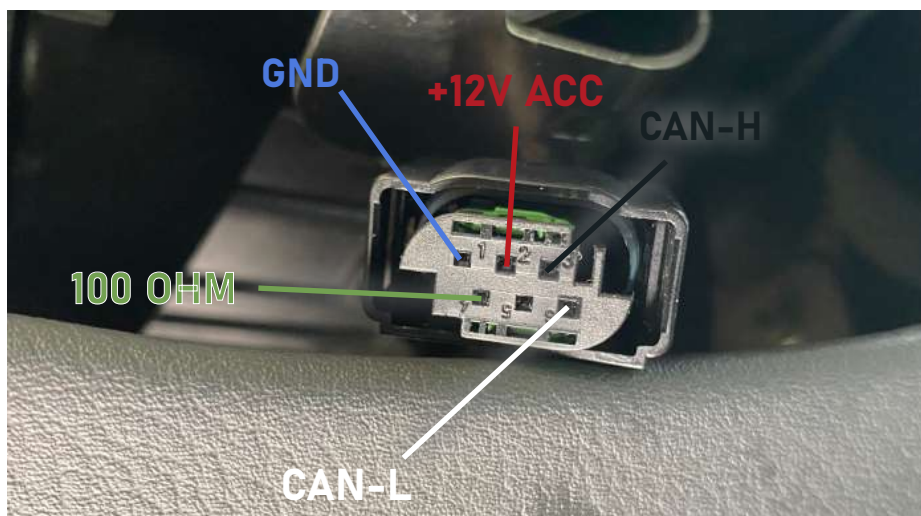
## ESL 1

1 " Disconnect plug from ESL

2 " To choose the program you have to solder specific jumpers on the back of the Emulator:  
2+6



3 " Connect S.O.S to ESL plug according to the picture below.



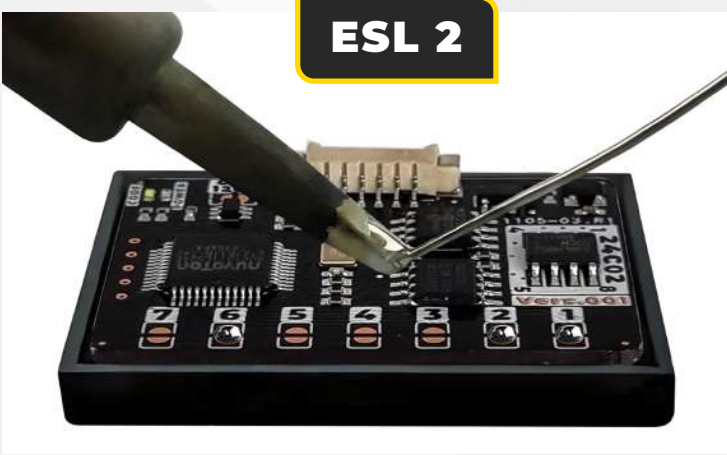
4 " The original ESL needs to be removed from the car.



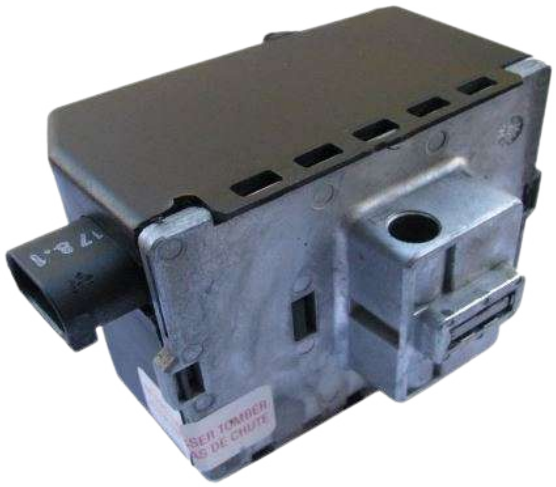
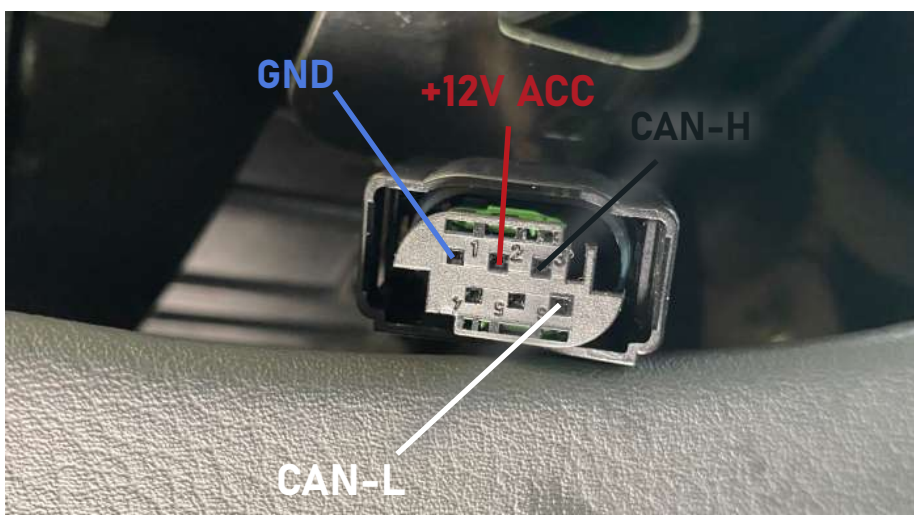
# ESL 2

1 " • Disconnect plug from ESL

2 " • To choose the program you have to solder specific jumpers on the back of the Emulator:  
**1+2+6**



3 " • Connect S.O.S to ESL plug according to the picture below.



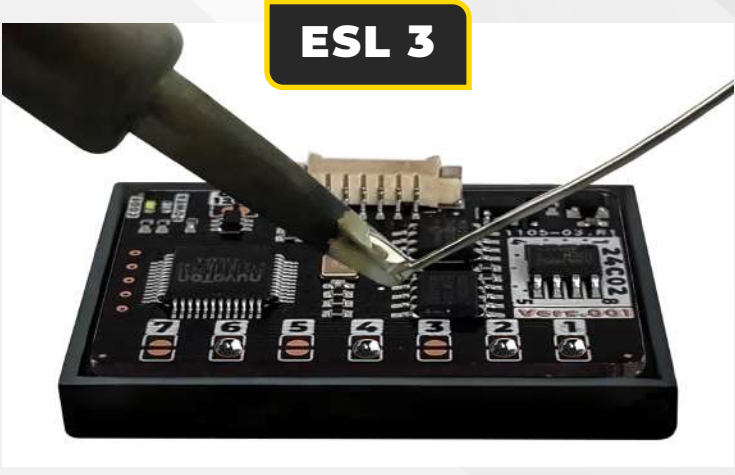
4 " • The original ESL needs to be removed from the car.



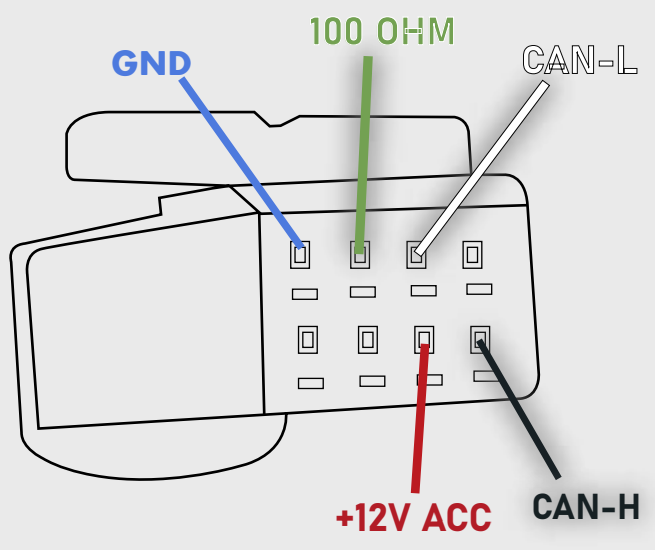
# ESL 3

1 " • Disconnect plug from ESL

2 " • To choose the program you have to solder specific jumpers on the back of the Emulator:  
**1+2+4+6**



3 " • Connect S.O.S to ESL plug according to the picture below.



4 " • The original ESL needs to be removed from the car.